

BIRDS EYE LOOKING NORTH

PRELIMINARY NOT TO BE USED
FOR CONSTRUCTION

REVISIONS					
B	02/16/22	ISSUED FOR REVIEW	DE	LK	RLP
A	09/07/21	ISSUED FOR TOWNSHIP MEETING	TMT	MJS	RLP
REV	DATE	DESCRIPTION	DRWN	CHKD	APP

Drawing1.dwg Escamilla 2/16/2022 12:07:23 PM

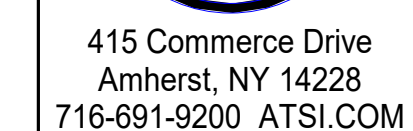


415 Commerce Drive
Amherst, NY 14228
716-691-9200 ATSI.COM

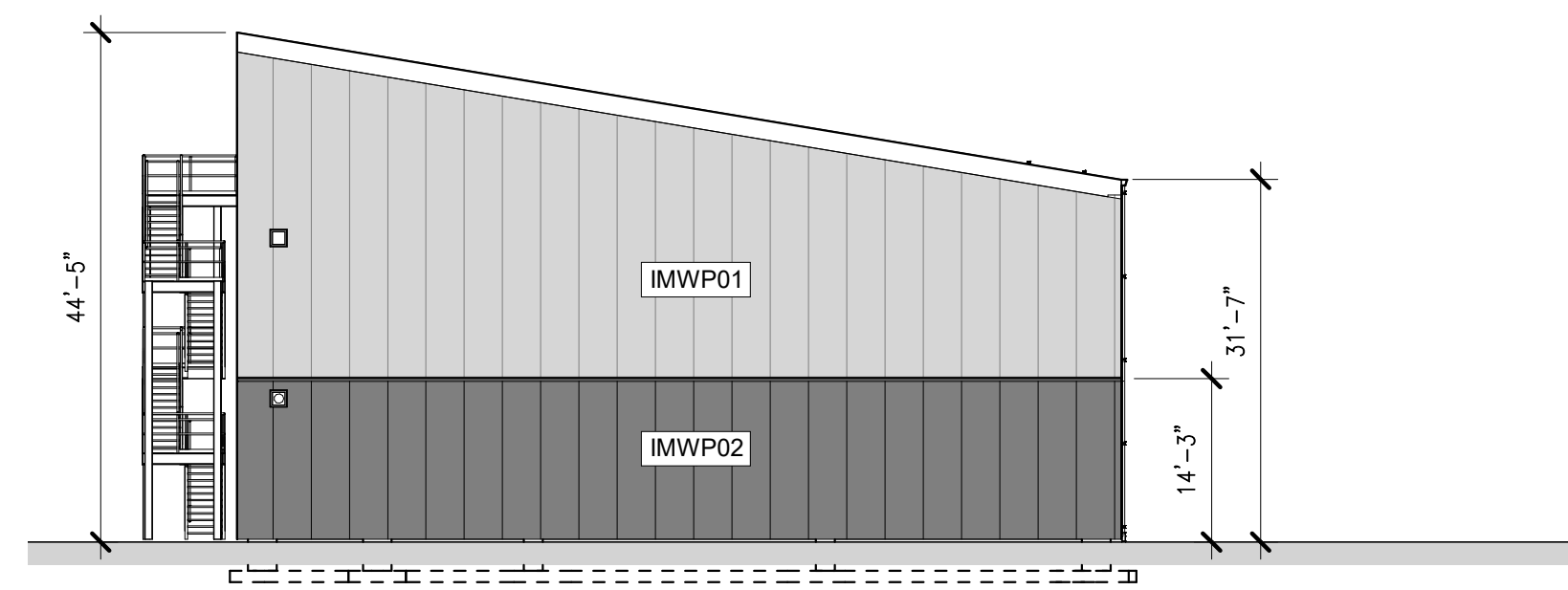
PLUG POWER – GATEWAY – ALABAMA NY ELECTROLYTIC HYDROGEN PLANT SITE RENDERS			
CLIENT APPROVAL	APPROVAL DATE:	CLIENT DRAWING NO:	AFE NO:
SCALE: NTS	JOB No: 10071	DRAWING NO: 10071-00-3ARMD-001	REV: B



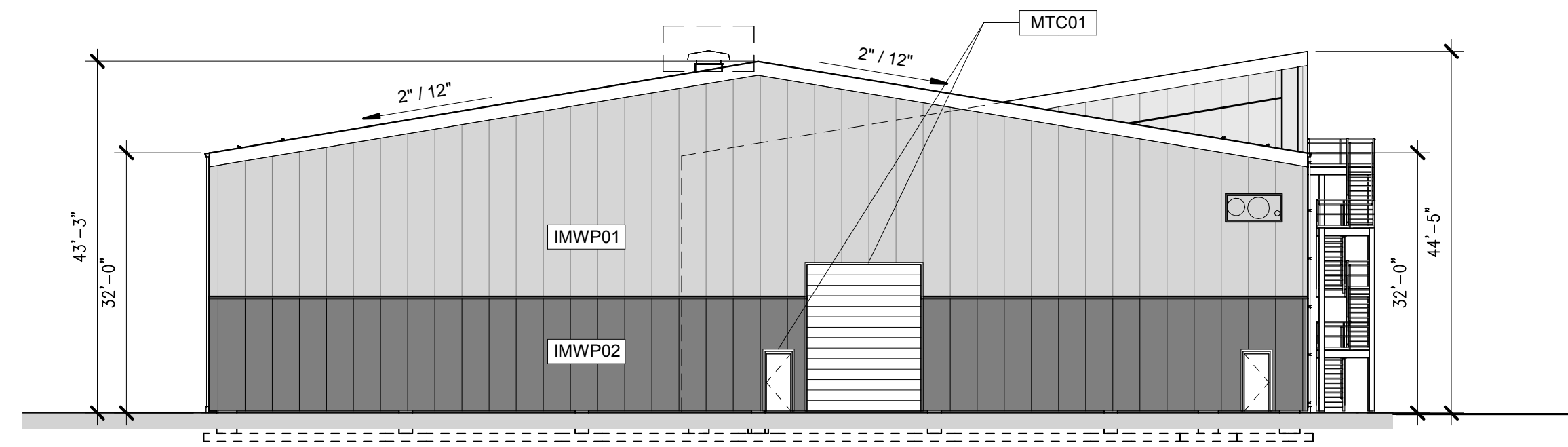
PRELIMINARY NOT TO BE USED
FOR CONSTRUCTION



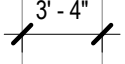
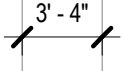


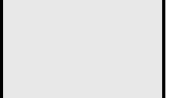
Copyright © 2021 For-Albert Associates, all rights reserved. No portion of this drawing may be reproduced, stored, or transmitted by any means without prior written permission of the architect. Alterations to this document are illegal except when made in accordance with the New York State Education Law, Section 7209, Subdivision 2.



01-ELECTROLYZER BUILDING
EAST FACADE
SCALE: 1/16" = 1'-0"

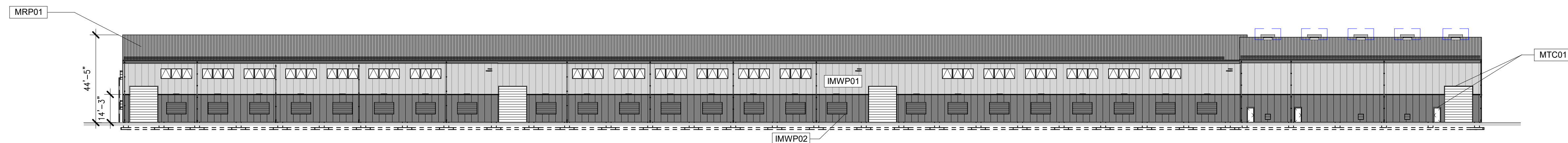


01-ELECTROLYZER BUILDING
WEST FACADE
SCALE: 1/16" = 1'-0"

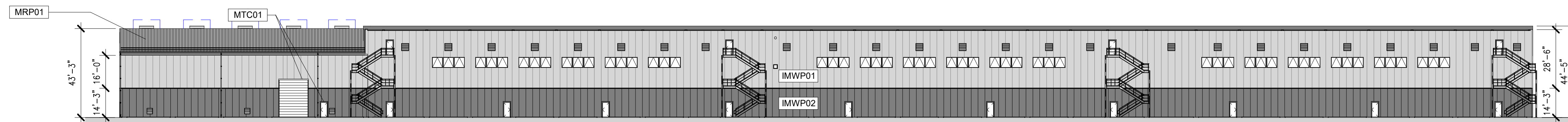
EXTERIOR FINISH MATERIALS SCHEDULE						
COLOR	MARK	PATTERN	MATERIAL	DESCRIPTION	SPEC	SECTION
	IMWP01		INSULATED METAL WALL PANELS	MANUFACTURER: ATAS INTERNATIONAL PRODUCT: ISOLAREN ML COLOR: 16 – ROCKY GRAY	07 4213	
	IMWP02		INSULATED METAL WALL PANELS	MANUFACTURER: ATAS INTERNATIONAL PRODUCT: ISOLAREN ML COLOR: 13 – DOVE GRAY	07 4213	
	MTQ01		METAL TRIM CLOSURE	MANUFACTURER: ATAS INTERNATIONAL PRODUCT: COIL STOCK COLOR: MATCH ADJACENT PANELS	07 4213	
	MRP01		STANDING SEAM METAL ROOF PANELS	MANUFACTURER: ATAS OR EQ. PRODUCT: TBD COLOR: 16 – ROCKY GRAY	07 4113.16	
	HPC01		HIGH PERFORMANCE COATING	MANUFACTURER: SHERWIN WILLIAMS TYPE: INTERIOR/EXTERIOR EPOXY COLOR: MATCH ADJACENT PANELS	09 9101	

NOTES:

1. BEFORE FINAL FURNISHING OF MATERIALS, COORDINATE COLOR SCHEME WITH ARCHITECT TO VERIFY ALL AREAS INDICATED ARE CORRECT.
2. ALL GUTTERS, DOWNSPOUTS, COPINGS, FLASHINGS AND TRIM WILL MATCH ADJACENT MAIN FIELD COLOR AREA MATERIAL UNLESS NOTED OTHERWISE. FINAL SELECTION WILL BE THROUGH ARCHITECT FROM PHYSICAL SAMPLES OF ALL FLASHINGS AND TRIM.
3. ALL EXTERIOR ASSIMILAR MATERIALS WILL BE SEALED WEATHER TIGHT WITH THE PROPER BACKER ROD AND TYPE 1 SEALANT, COLOR WILL MATCH ADJACENT MATERIALS, DARKER COLOR SUPERCEDES. COORDINATE ALL SEALANT COLOR SELECTIONS TO BE USED ON THE PROJECT WITH THE ARCHITECT USING ELEVATIONS FOR VERIFICATION OF LOCATION AND APPLICATION.



01-ELECTROLYZER BUILDING
NORTH FACADE
SCALE: 1/32" = 1'-0"



01-ELECTROLYZER BUILDING
SOUTH FACADE
SCALE: 1/32" = 1'-0"

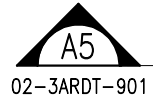
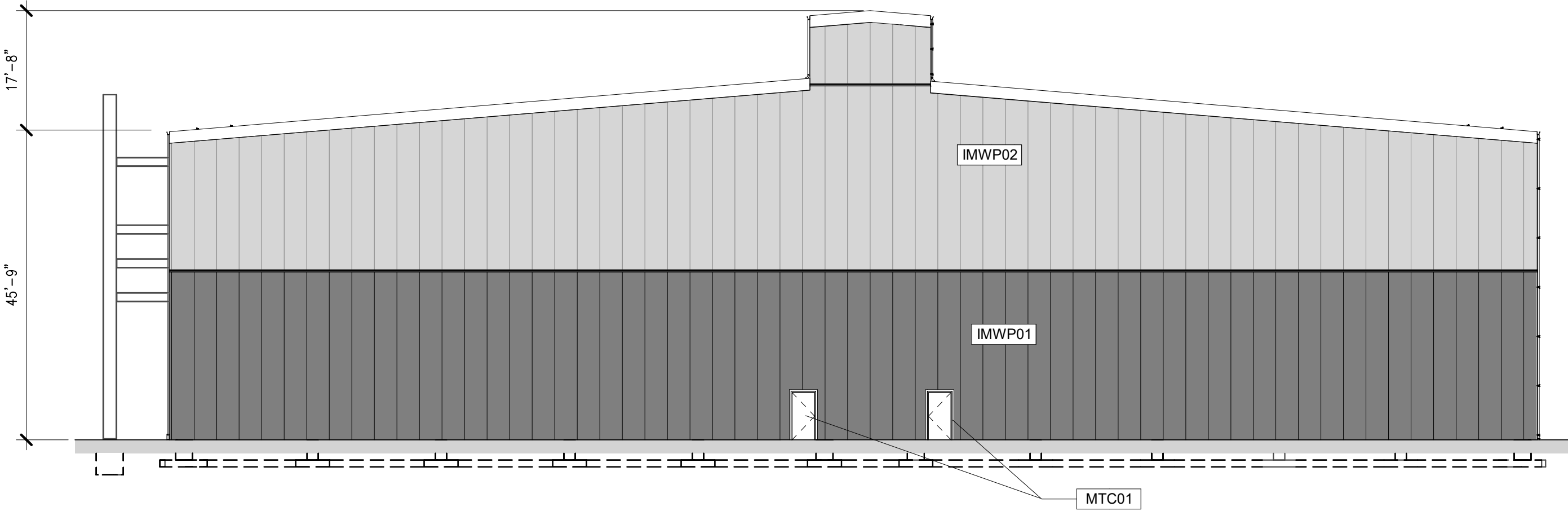
[illegible]

PRELIMINARY NOT TO BE USED
FOR CONSTRUCTION

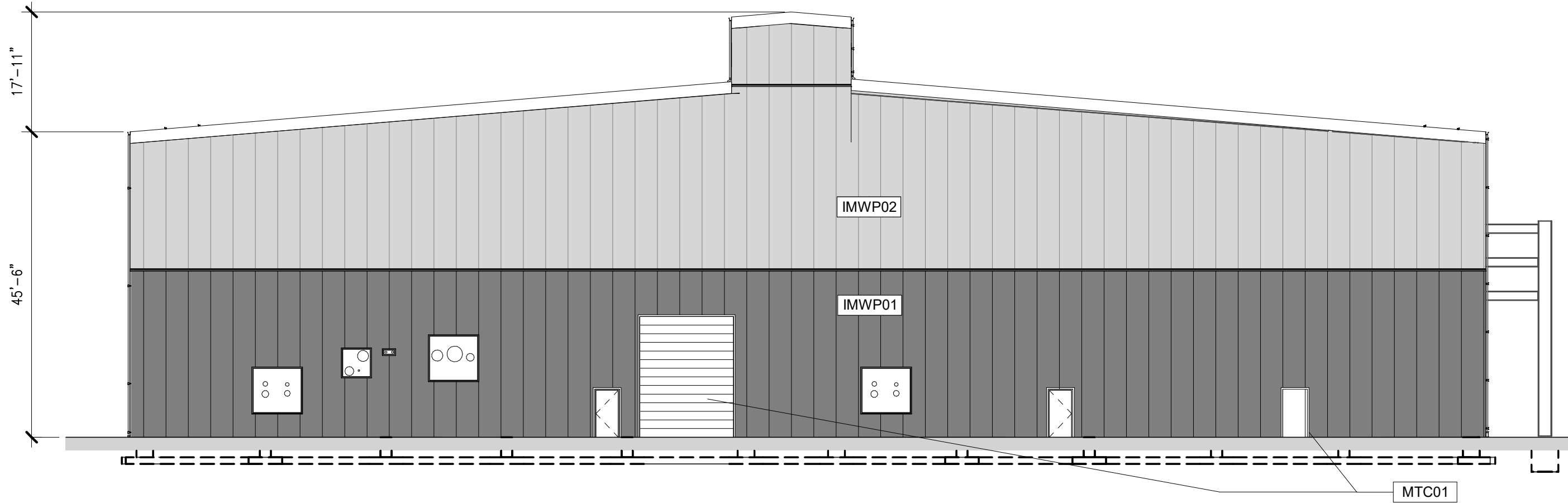


PLUG POWER - GATEWAY - ALABAMA NY ELECTROLYTIC HYDROGEN PLANT 01 - ELECTROLYZER - FACADE STUDY ELEVATIONS

CLIENT APPROVAL	APPROVAL DATE: 02/16/22	CLIENT DRAWING NO:	AFE NO:
SCALE:	JOB No: 10071	DRAWING NO: 01-3ARDT-901	REV:



02-LIQUEFACTION BUILDING
WEST FACING ELEVATION
SCALE: 1/16" = 1'-0"



02-LIQUEFACTION BUILDING
EAST FACING ELEVATION
SCALE: 1/16" = 1'-0"

EXTERIOR FINISH MATERIALS SCHEDULE					
COLOR	MARK	PATTERN	MATERIAL	DESCRIPTION	SPEC. SECTION
	IMWP01		INSULATED METAL WALL PANELS	MANUFACTURER: ATAS INTERNATIONAL PRODUCT: ISOLAREN ML COLOR: 16 - ROCKY GRAY	07 4213
	IMWP02		INSULATED METAL WALL PANELS	MANUFACTURER: ATAS INTERNATIONAL PRODUCT: ISOLAREN ML COLOR: 13 - DOVE GRAY	07 4213
	MTC01		METAL TRIM CLOSURE	MANUFACTURER: ATAS INTERNATIONAL PRODUCT: COIL STOCK COLOR: MATCH ADJACENT PANELS	07 4213
	MRP01		STANDING SEAM METAL ROOF PANELS	MANUFACTURER: ATAS OR EQ. PRODUCT: TBD COLOR: 16 - ROCKY GRAY	07 4113.16
	HPC01		HIGH PERFORMANCE COATING	MANUFACTURER: SHERWIN WILLIAMS TYPE: INTERIOR/EXTERIOR EPOXY COLOR: MATCH ADJACENT PANELS	09 9101

- NOTES:
- BEFORE FINAL FURNISHING OF MATERIALS, COORDINATE COLOR SCHEME WITH ARCHITECT TO VERIFY ALL AREAS INDICATED ARE CORRECT.
 - ALL CUTTERS, DOWNSPOUTS, COPINGS, FLASHINGS AND TRIM WILL MATCH ADJACENT MAIN FIELD. COLOR AREA MATERIAL UNLESS NOTED OTHERWISE. FINAL SELECTION WILL BE THROUGH ARCHITECT FROM PHYSICAL SAMPLES OF METAL FLASHINGS AND TRIM.
 - ALL EXTERIOR DISSIMILAR MATERIALS WILL BE SEALED WEATHER TIGHT WITH THE PROPER BACKER ROD AND TYPE1 SEALANT, COLOR WILL MATCH ADJACENT MATERIALS, DARKER COLOR SUPERCEDES. COORDINATE ALL SEALANT COLOR SELECTIONS TO BE USED ON THE PROJECT WITH THE ARCHITECT USING ELEVATIONS FOR VERIFICATION OF LOCATION AND APPLICATION.

Copyright © 2021, For Albert Associates, all rights reserved. No portion of this drawing may be reproduced, stored, or transmitted by any means without prior written permission of the architect. Alterations to this document are legal except when made in accordance with the New York State Education Law, Section 2709, Subdivision 2.

REVISIONS					
REV	DATE	DESCRIPTION	DRWN	CHKD	APP

C:\Users\Spangler\Documents\21093.01_Plug Power Alabama NY_Full Campus_v21_nspangler\ASCR4.rvt 2/16/2022 10:20:05 AM

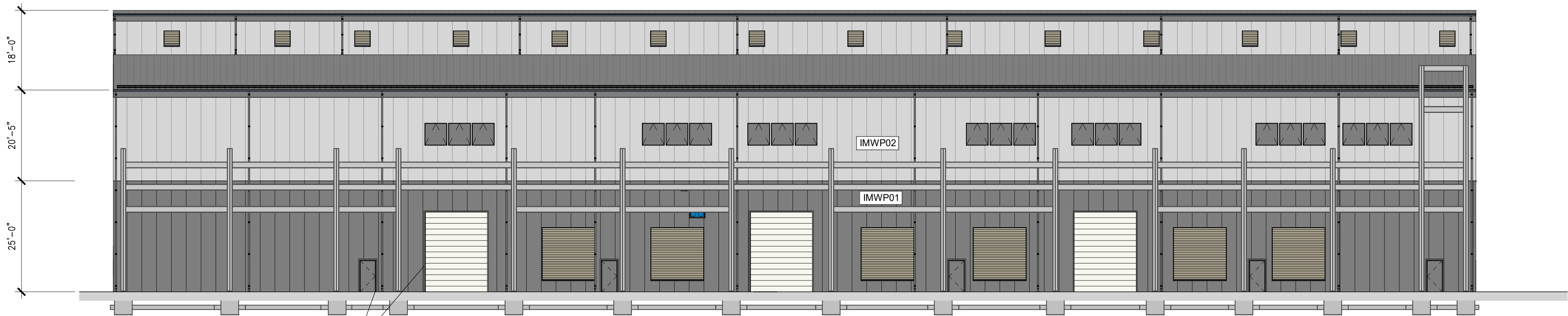
PRELIMINARY NOT TO BE USED
FOR CONSTRUCTION



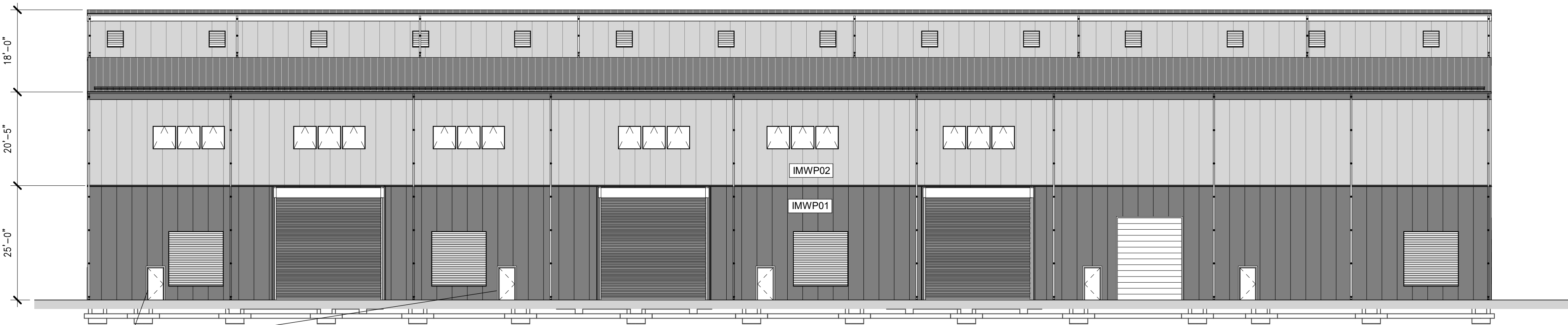
415 Commerce Drive
Amherst, NY 14228
716-691-9200 ATSI.COM

PLUG POWER – GATEWAY – ALABAMA NY ELECTROLYTIC HYDROGEN PLANT 02 – LIQUEFACTION – FACADE STUDY ELEVATIONS			
CLIENT APPROVAL	APPROVAL DATE: 02/16/22	CLIENT DRAWING NO:	AFE NO:
SCALE:	JOB No: 10071	DRAWING NO: 02-3ARDT-901	REV:

Copyright © 2021 Foit-Albert Associates, all rights reserved. No portion of this drawing may be reproduced, stored, or transmitted by any means without prior written permission of the architect. Alterations to this document are illegal except when made in accordance with the New York State Education Law, Section 2709, Subdivision 2.



02-LIQUEFACTION BUILDING
NORTH FACADE
SCALE: 1/16" = 1'-0"



02-LIQUEFACTION BUILDING
SOUTH FACADE
SCALE: 1/16" = 1'-0"

EXTERIOR FINISH MATERIALS SCHEDULE					
COLOR	MARK	PATTERN	MATERIAL	DESCRIPTION	SPEC SECTION
	IMWP01	3'-4"	INSULATED METAL WALL PANELS	MANUFACTURER: ATAS INTERNATIONAL PRODUCT: ISOLAREN ML COLOR: 16 - ROCKY GRAY	07 4213
	IMWP02	3'-4"	INSULATED METAL WALL PANELS	MANUFACTURER: ATAS INTERNATIONAL PRODUCT: ISOLAREN ML COLOR: 13 - DOVE GRAY	07 4213
	MTC01		METAL TRIM CLOSURE	MANUFACTURER: ATAS INTERNATIONAL PRODUCT: COIL STOCK COLOR: MATCH ADJACENT PANELS	07 4213
	MRP01		STANDING SEAM METAL ROOF PANELS	MANUFACTURER: ATAS OR EQ. PRODUCT: TBD COLOR: 16 - ROCKY GRAY	07 4113.16
	HPC01		HIGH PERFORMANCE COATING	MANUFACTURER: SHERWIN WILLIAMS TYPE: INTERIOR/EXTERIOR EPOXY COLOR: MATCH ADJACENT PANELS	09 9101

- NOTES:
- BEFORE FINAL FURNISHING OF MATERIALS, COORDINATE COLOR SCHEME WITH ARCHITECT TO VERIFY ALL AREAS INDICATED ARE CORRECT.
 - ALL GUTTERS, DOWNSPOUTS, COPINGS, FLASHINGS AND TRIM WILL MATCH ADJACENT MAIN FIELD COLOR AREA MATERIAL UNLESS NOTED OTHERWISE. FINAL SELECTION WILL BE THROUGH ARCHITECT FROM PHYSICAL SAMPLES OF METAL FLASHINGS AND TRIM.
 - ALL EXTERIOR DISSIMILAR MATERIALS WILL BE SEALED WEATHER TIGHT WITH THE PROPER BACKER, ROD AND TYPE1 SEALANT, COLOR WILL MATCH ADJACENT MATERIALS, DARKER COLOR SUPERCEDES. COORDINATE ALL SEALANT COLOR SELECTIONS TO BE USED ON THE PROJECT WITH THE ARCHITECT USING ELEVATIONS FOR VERIFICATION OF LOCATION AND APPLICATION.

REVISIONS

REV	DATE	DESCRIPTION	DRWN	CHKD	APP

PRELIMINARY NOT TO BE USED
FOR CONSTRUCTION



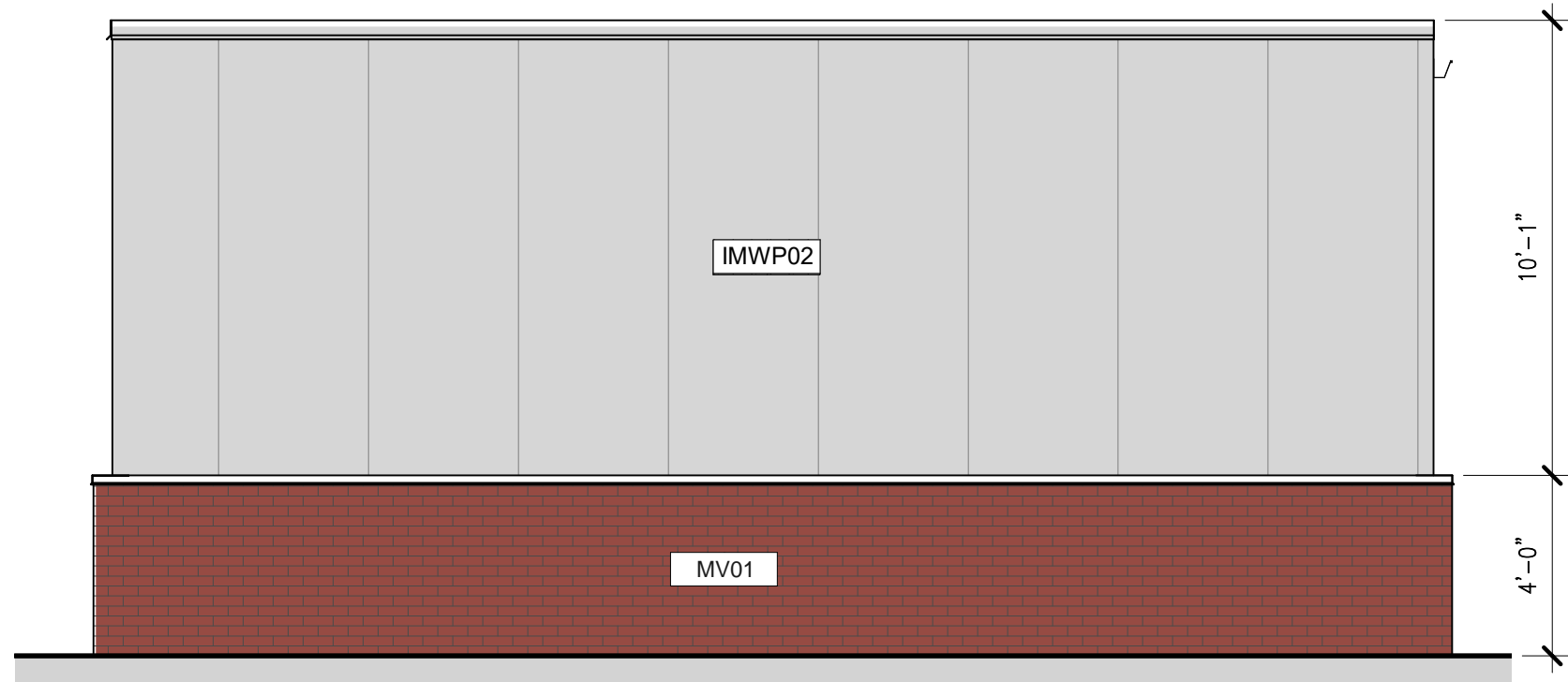
PLUG POWER – GATEWAY – ALABAMA NY ELECTROLYTIC HYDROGEN PLANT 02 – LIQUEFACTION – FACADE STUDY ELEVATIONS			
CLIENT APPROVAL	APPROVAL DATE: 02/16/22	CLIENT DRAWING NO:	AFE NO:
SCALE:	JOB No: 10071	DRAWING NO: 02-3ARDT-902	REV:

PRELIMINARY NOT TO BE USED
FOR CONSTRUCTION

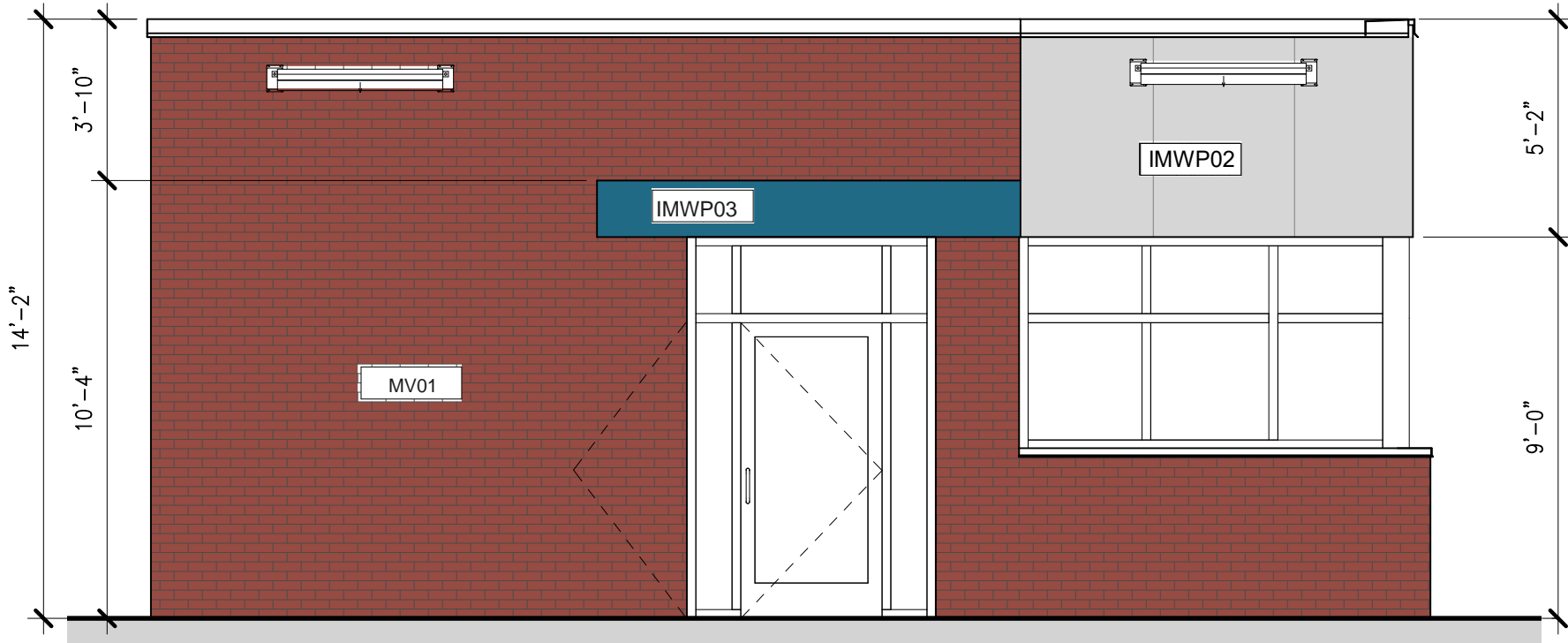
PLUG POWER – GATEWAY – ALABAMA NY
ELECTROLYTIC HYDROGEN PLANT
07 – OPERATIONS AND MAINTENANCE – FACADE
STUDY ELEVATIONS

CLIENT APPROVAL	APPROVAL DATE: 02/16/22	CLIENT DRAWING NO:	AFE NO:
SCALE:	JOB No: 10071	DRAWING NO: 07-3ARDT-901	REV:

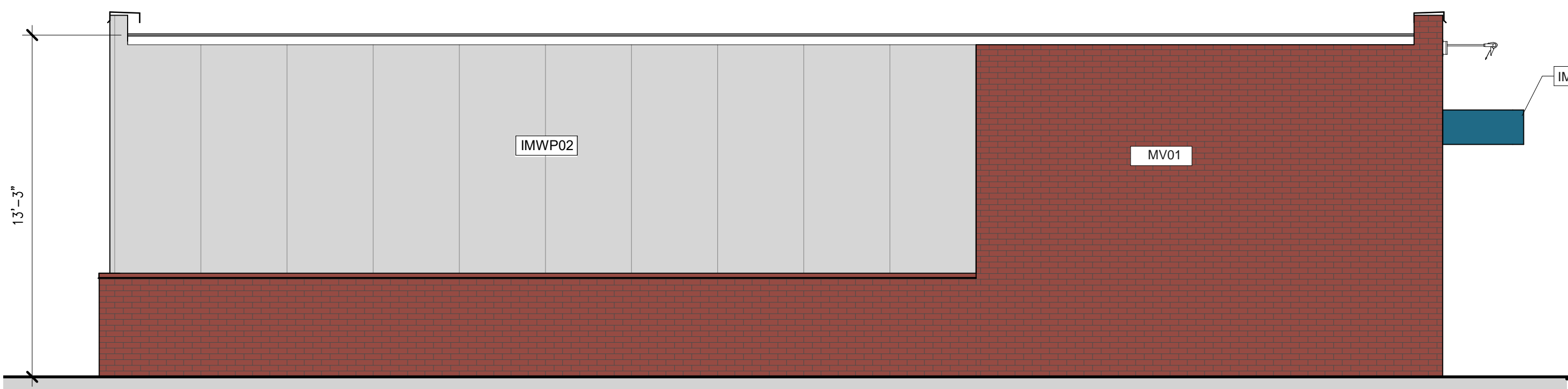
Copyright © 2021, For All Other Associates, all rights reserved. No portion of this drawing may be reproduced, stored, or transmitted by any means without prior written permission of the architect. Alterations to this document are legal unless made in accordance with the New York State Education Law, Section 2709, Subdivision 2.



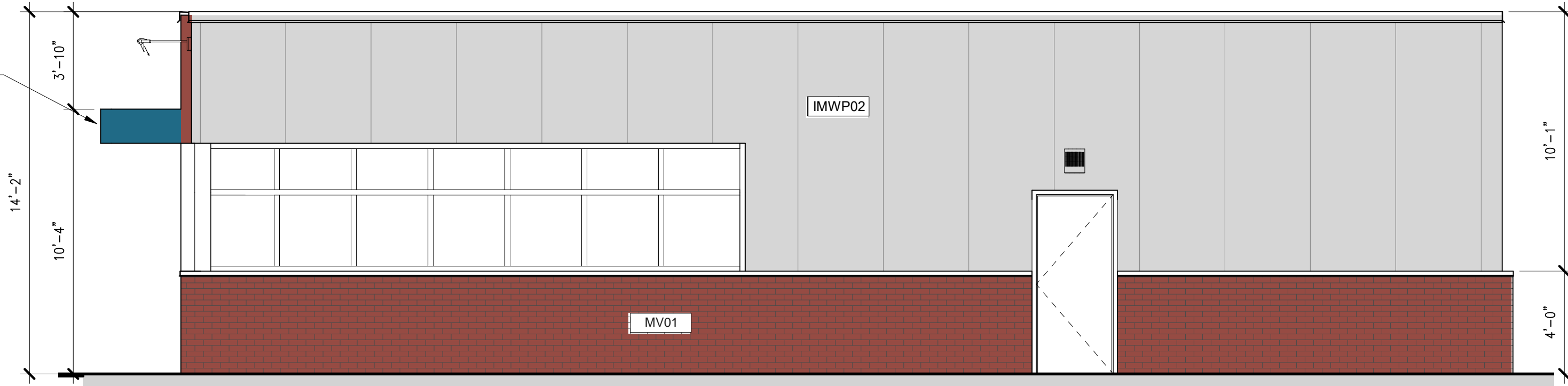
07 - CONTROL BUILDING
WEST ELEVATION
SCALE: 1/4" = 1'-0"



07 - CONTROL BUILDING
EAST ELEVATION
SCALE: 1/4" = 1'-0"



07 - CONTROL BUILDING
SOUTH ELEVATION
SCALE: 1/4" = 1'-0"



07 - CONTROL BUILDING
NORTH ELEVATION
SCALE: 1/4" = 1'-0"

EXTERIOR FINISH MATERIALS SCHEDULE

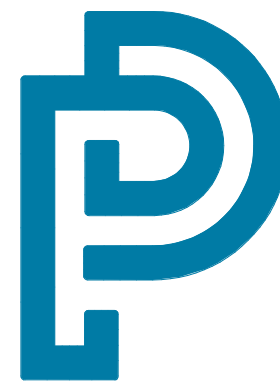
COLOR	MARK	PATTERN	MATERIAL	DESCRIPTION	SPEC SECTION
	IMWP02	3'-4"	INSULATED METAL WALL PANELS	MANUFACTURER: ATAS INTERNATIONAL PRODUCT: ISOLAREN ML COLOR: 13 - DOVE GRAY	07 4213
	IMWP03	3'-4"	INSULATED METAL WALL PANELS	MANUFACTURER: ATAS INTERNATIONAL PRODUCT: ISOLAREN ML COLOR: 18 - REGAL BLUE	07 4213
	MTC01		METAL TRIM CLOSURE	MANUFACTURER: ATAS INTERNATIONAL PRODUCT: COIL STOCK COLOR: MATCH ADJACENT PANELS	07 4213
	MRP01		STANDING SEAM METAL ROOF PANELS	MANUFACTURER: ATAS OR EQ. PRODUCT: TBD COLOR: 16 - ROCKY GRAY	07 4113.16
	HPC01		HIGH PERFORMANCE COATING	MANUFACTURER: SHERWIN WILLIAMS TYPE: INTERIOR/EXTERIOR EPOXY COLOR: MATCH ADJACENT PANELS	09 9101
	MV01		MASONRY VENEER	MANUFACTURER: GLEN-GERY TYPE: OLD DETROIT MODULAR COLOR: RUST	04 2613

- NOTES:
- BEFORE FINAL FURNISHING OF MATERIALS, COORDINATE COLOR SCHEME WITH ARCHITECT TO VERIFY ALL AREAS INDICATED ARE CORRECT.
 - ALL CUTTERS, DOWNSPOUTS, COPINGS, FLASHINGS AND TRIM WILL MATCH ADJACENT MAIN FIELD COLOR AREA MATERIAL UNLESS NOTED OTHERWISE. FINAL SELECTION WILL BE THROUGH ARCHITECT FROM PHYSICAL SAMPLES OF METAL FLASHINGS AND TRIM.
 - ALL EXTERIOR DISSIMILAR MATERIALS WILL BE SEALED WEATHER TIGHT WITH THE PROPER BACKER ROD AND TYPE1 SEALANT, COLOR WILL MATCH ADJACENT MATERIALS, DARKER COLOR SUPERCEDES. COORDINATE ALL SEALANT COLOR SELECTIONS TO BE USED ON THE PROJECT WITH THE ARCHITECT USING ELEVATIONS FOR VERIFICATION OF LOCATION AND APPLICATION.

REVISIONS

REV	DATE	DESCRIPTION	DRWN	CHKD	APP

PRELIMINARY NOT TO BE USED
FOR CONSTRUCTION



415 Commerce Drive
Amherst, NY 14228
716-691-9200 ATSI.COM

PLUG POWER - GATEWAY - ALABAMA NY
ELECTROLYTIC HYDROGEN PLANT
08 - CONTROL BUILDING - FACADE STUDY
ELEVATIONS

CLIENT APPROVAL	APPROVAL DATE: 02/14/22	CLIENT DRAWING NO:	AFE NO:
SCALE:	JOB No: 10071	DRAWING NO: 08-3ARDT-901	REV: