



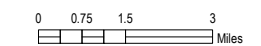
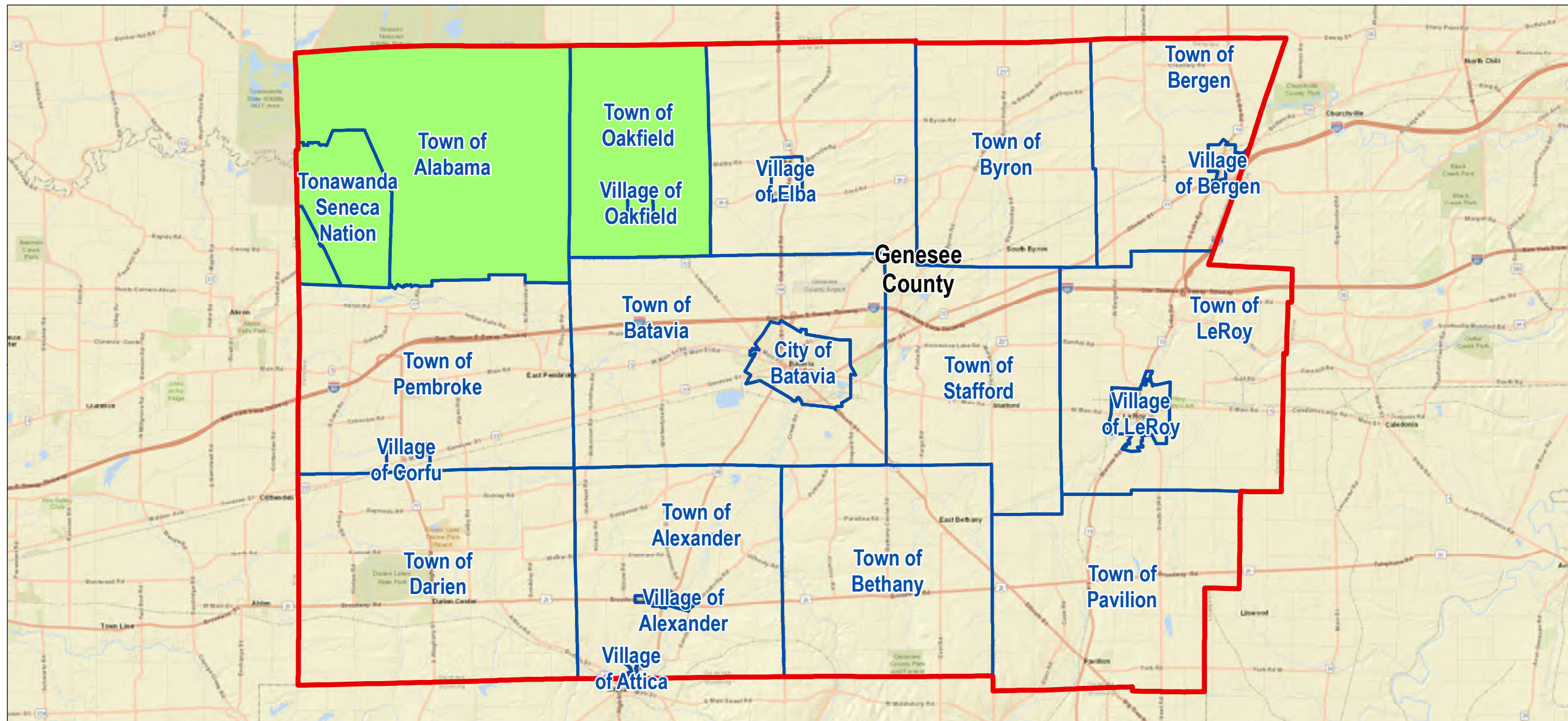
Oakfield & Alabama Agriculture & Farmland Protection Plan

Regional Setting

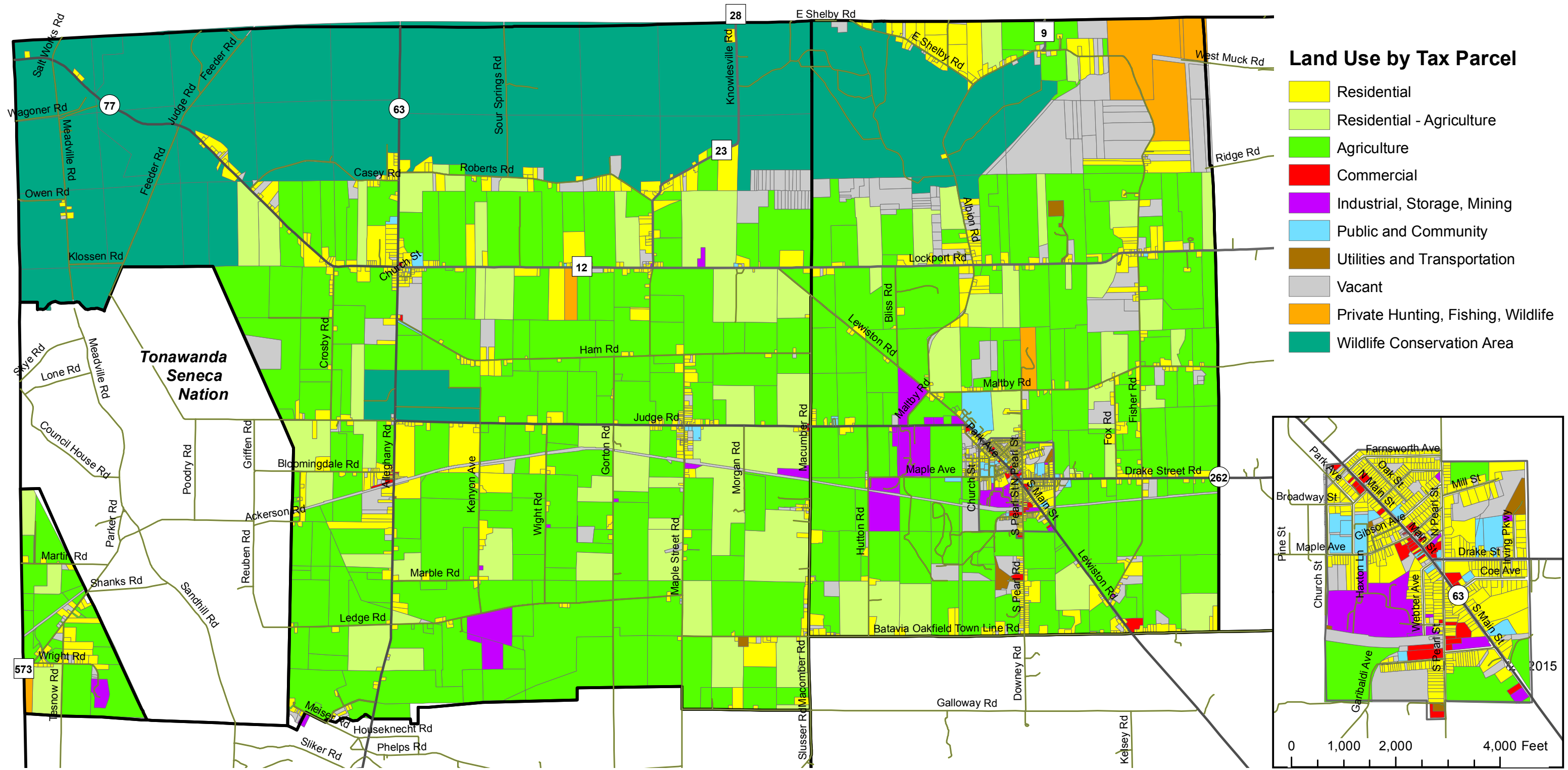


LEGEND

- Genesee County Boundary
- Municipal Boundary

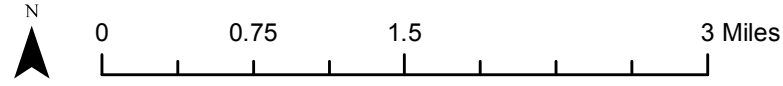
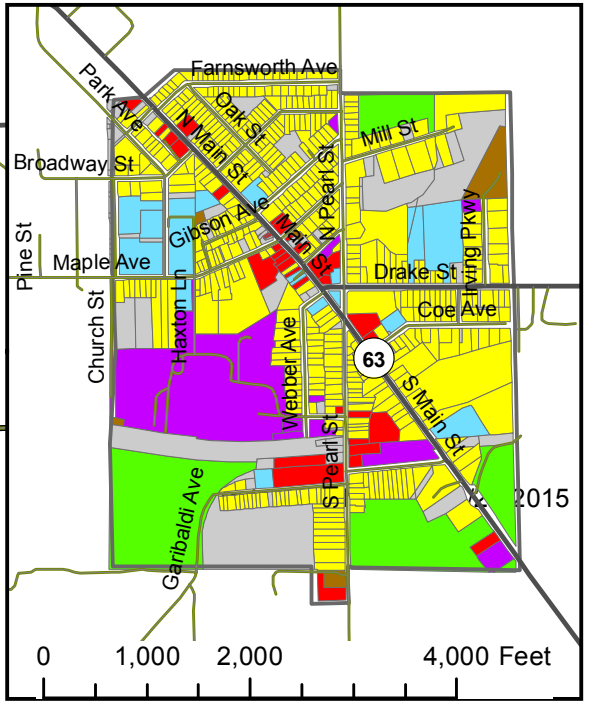


Wendel WD Architecture, Engineering, Surveying & Landscape Architecture, P.C. shall assume no liability for 1. Any errors, omissions, or inaccuracies in the information provided regardless of how caused or; 2. Any decision or action taken or not taken by the reader in reliance upon any information or data furnished hereunder. Data Sources: USDA NRCS




Land Use by Tax Parcel

- Residential
- Residential - Agriculture
- Agriculture
- Commercial
- Industrial, Storage, Mining
- Public and Community
- Utilities and Transportation
- Vacant
- Private Hunting, Fishing, Wildlife
- Wildlife Conservation Area



Data Sources: 2014 tax parcel records obtained from Genesee County, Aerial imagery obtained from Google Maps and Google Street View.
 2014 land use based on the Assessor's Property Classification.
 Land use verified or updated based on analysis of aerial imagery.

Land Use by Tax Parcel
 Oakfield and Alabama, Genesee County, NY]

 **CC Environment & Planning**
 23 Jackson St.
 Batavia, NY 14020
 (585)219-4030



LABELLA

Map 1

Prepared by: LaBella Associates, 06/25/2015



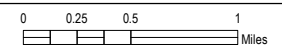
Oakfield & Alabama Agriculture & Farmland Protection Plan

Zoning



LEGEND

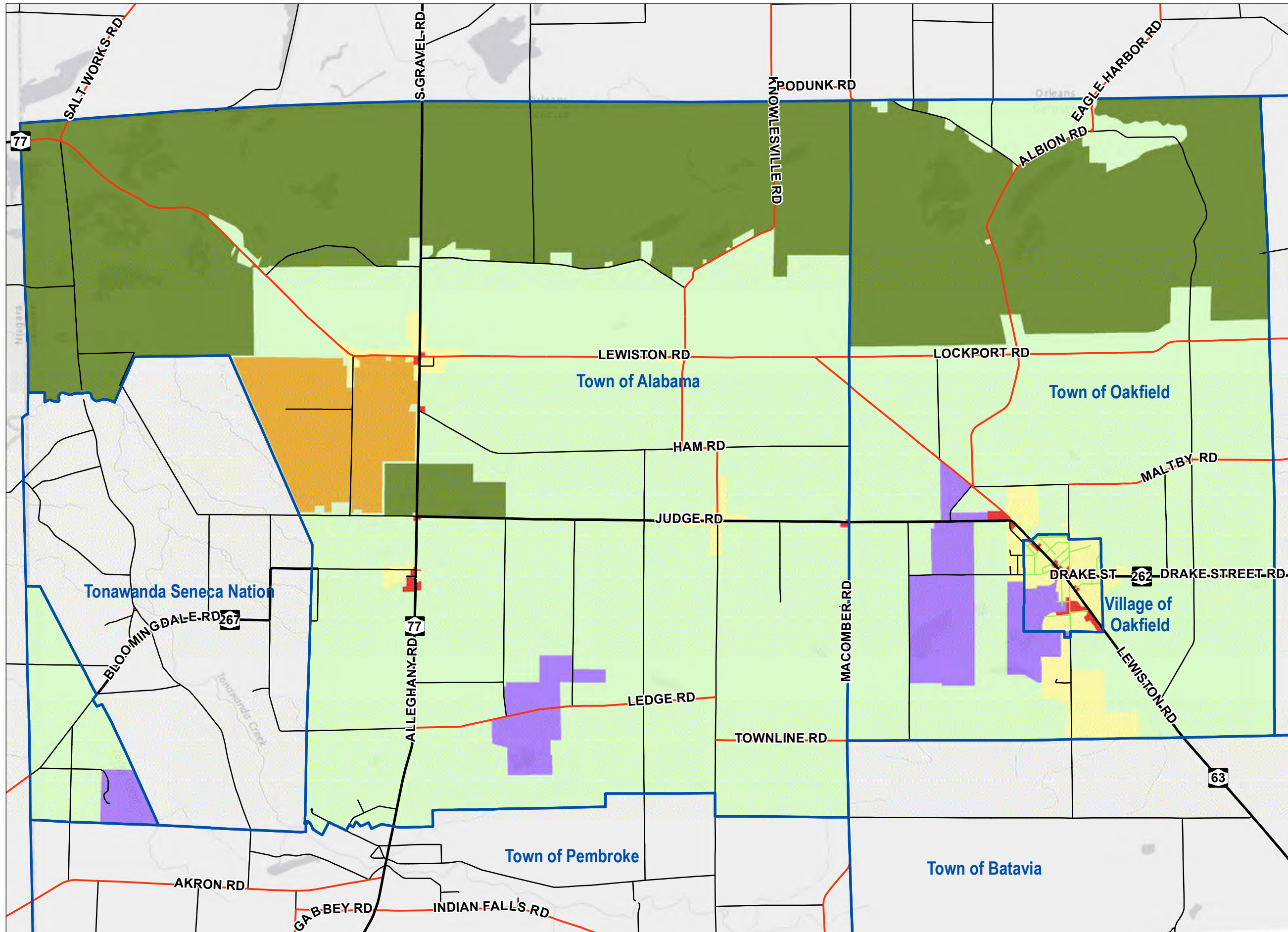
- Municipal Boundary
- General Zoning**
 - Agricultural Residential
 - Residential
 - Technology District
 - Commercial
 - Industrial
 - Land Conservation
- Road Jurisdiction**
 - Interstate Highway
 - State Route
 - County Highway
 - Town Road
 - City Street
 - Village Street



Wendel WD Architecture, Engineering, Surveying & Landscape Architecture, P.C. shall assume no liability for 1. Any errors, omissions, or inaccuracies in the information provided regardless of how caused or; 2. Any decision or action taken or not taken by the reader in reliance upon any information or data furnished hereunder.

Data Sources: Genesee County Department of Planning, Esri, HERE, DeLorme, MapmyIndia, © OpenStreetMap contributors, and the GIS user community

Map Prepared by: Genesee County Planning Department





Oakfield & Alabama Agriculture & Farmland Protection Plan

Environmental Features

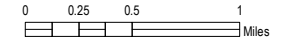


LEGEND

- Municipal Boundary
- Waterbody
- Stream
- FEMA Flood Hazard Area
- State Wetland
- Federal Wetland
- Aquifer

Road Jurisdiction

- Interstate Highway
- State Route
- County Highway
- Town Road
- City Street
- Village Street

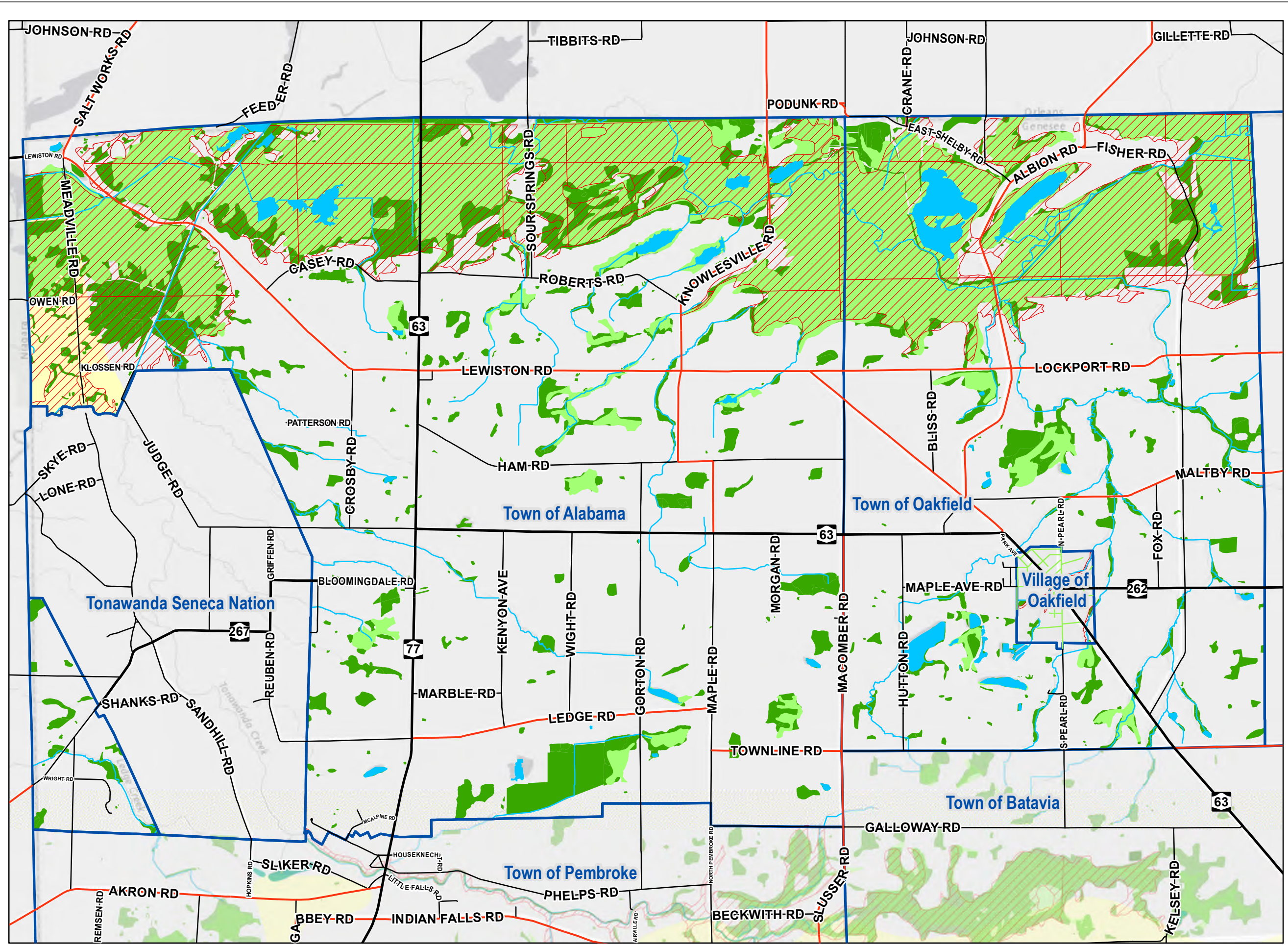


WD Project # 448103
Map Created: March, 2016

Wendel WD Architecture, Engineering, Surveying & Landscape Architecture, P.C. shall assume no liability for 1. Any errors, omissions, or inaccuracies in the information provided regardless of how caused or; 2. Any decision or action taken or not taken by the reader in reliance upon any information or data furnished hereunder.

Data Sources: NYS GIS Clearinghouse, FEMA, Genesee County Department of Planning, Esri, HERE, DeLorme, MapmyIndia, © OpenStreetMap contributors, and the GIS user community

Map Prepared by: Genesee County Planning Department





Town of Alabama

GENESEE COUNTY, NEW YORK

Comprehensive Plan Update

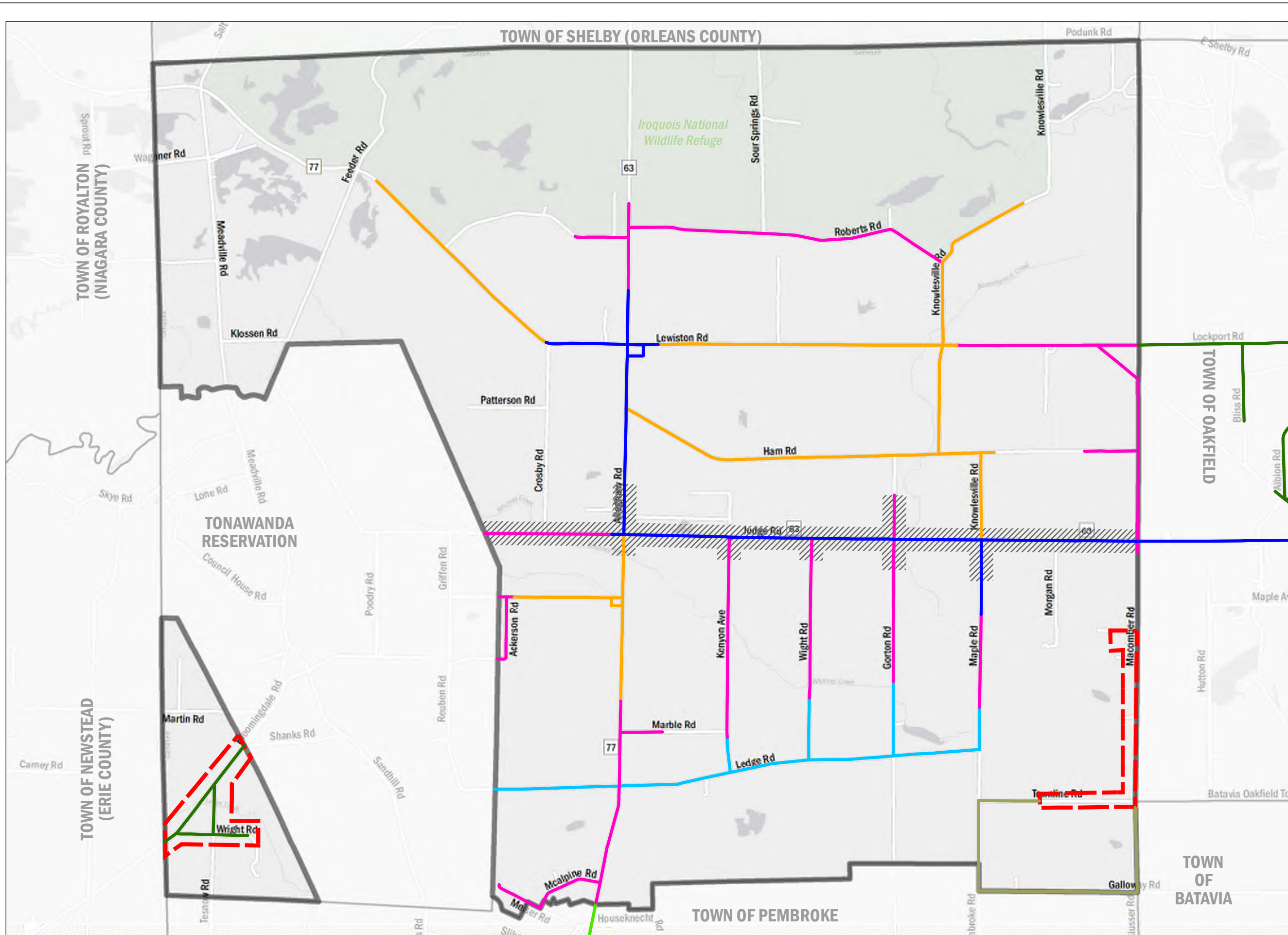
Map 13: Water Infrastructure



LEGEND

- Town of Alabama
- Water Districts
- Phased Water Location
 - Existing Water
 - Phase 1 Water
 - Phase 2 Water
 - Phase 3 Water
 - Phase 4 Water
 - Phase 5 Water
 - Pembroke Line
 - DR-14 Pipe Upgrade

0 0.25 0.5 1 Miles



WD Project # 43603CP
Map Created: August, 2017

Wendel WD Architecture, Engineering, Surveying & Landscape Architecture, P.C. shall assume no liability for 1. Any errors, omissions, or inaccuracies in the information provided regardless of how caused or; 2. Any decision or action taken or not taken by the reader in reliance upon any information or data furnished hereunder.

Data Sources: Esri, HERE, DeLorme, MapmyIndia, OpenStreetMap contributors, Clark Patterson Lee, NYS GIS Program Office



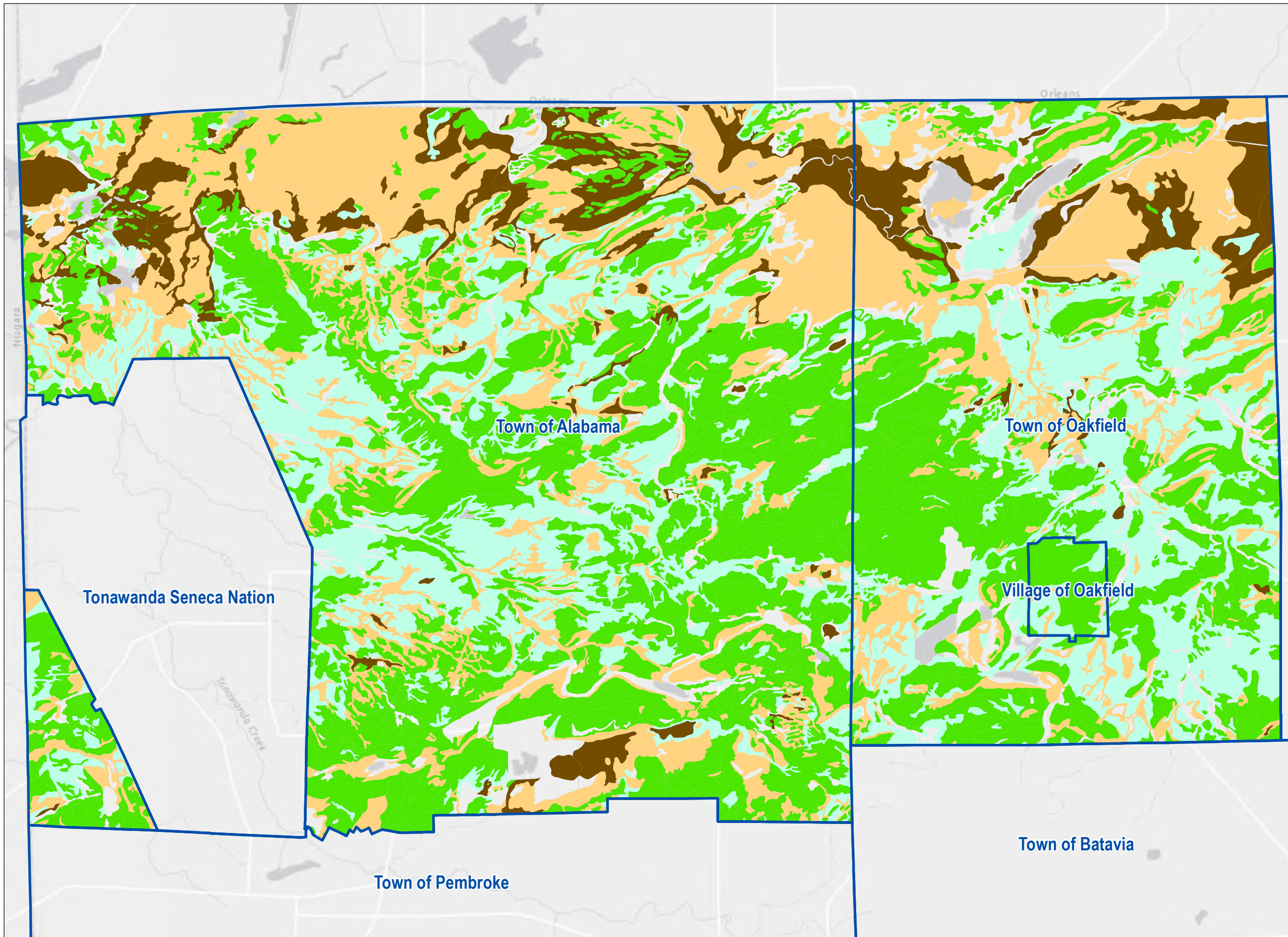
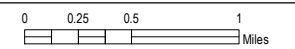
Oakfield & Alabama Agriculture & Farmland Protection Plan

Farmland Soils



LEGEND

- Municipal Boundary
- Strategic Farmland Soils
- Farmland Soil Classification**
 - Prime Farmland
 - Prime farmland if Drained
 - Farmland of Statewide Importance
 - Muck



WD Project # 448103
Map Created: March, 2016

Wendel WD Architecture, Engineering, Surveying & Landscape Architecture, P.C. shall assume no liability for 1. Any errors, omissions, or inaccuracies in the information provided regardless of how caused or; 2. Any decision or action taken or not taken by the reader in reliance upon any information or data furnished hereunder.
Data Sources: Genesee County Department of Planning, Esri, HERE, DeLorme, MapmyIndia, © OpenStreetMap contributors, and the GIS user community, USDA NRCS

Map Prepared by: Genesee County Planning Department



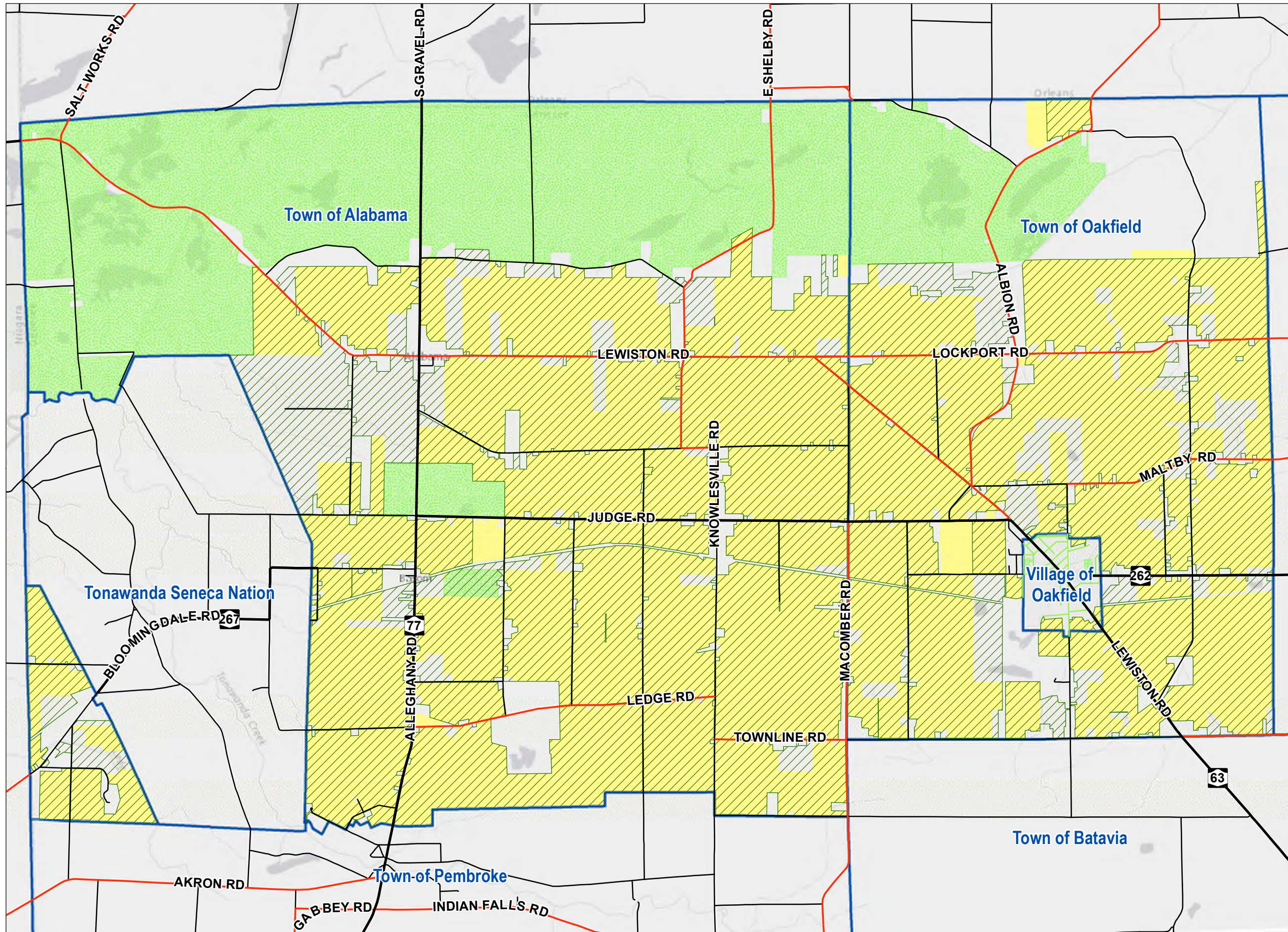
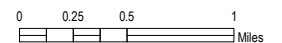
Oakfield & Alabama Agriculture & Farmland Protection Plan

Parcels with Ag Exemption



LEGEND

- Municipal Boundary
 - NYS Agricultural District
 - Ag Exempt Parcel
 - Park / Refuge / Protected Land
- Road Jurisdiction**
- Interstate Highway
 - State Route
 - County Highway
 - Town Road
 - City Street
 - Village Street



Wendel WD Architecture, Engineering, Surveying & Landscape Architecture, P.C. shall assume no liability for 1. Any errors, omissions, or inaccuracies in the information provided regardless of how caused or; 2. Any decision or action taken or not taken by the reader in reliance upon any information or data furnished hereunder.

Data Sources: Genesee County Department of Planning, Genesee County Real Property Tax Services, Esri, HERE, DeLorme, MapmyIndia, © OpenStreetMap contributors, and the GIS user community

Map Prepared by: Genesee County Planning Department



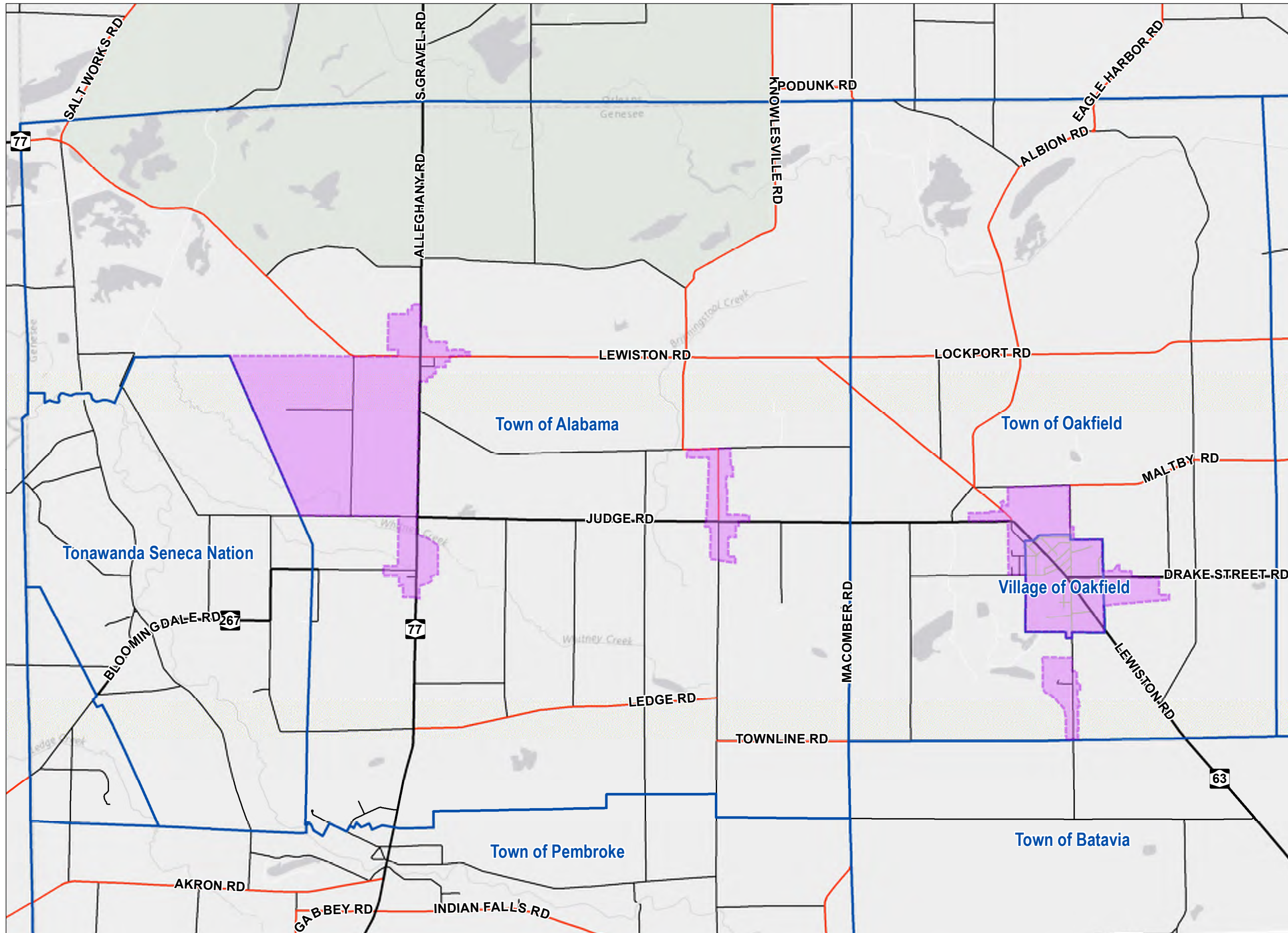
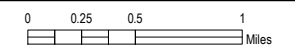
Oakfield & Alabama Agriculture & Farmland Protection Plan

Smart Growth Development



LEGEND

- Municipal Boundary
- Smart Growth Development Area
- Road Jurisdiction**
- Interstate Highway
- State Route
- County Highway
- Town Road
- City Street
- Village Street



WD Project # 448103
Map Created: March, 2017
Wendel WD Architecture, Engineering, Surveying & Landscape Architecture, P.C. shall assume no liability for 1. Any errors, omissions, or inaccuracies in the information provided regardless of how caused or; 2. Any decision or action taken or not taken by the reader in reliance upon any information or data furnished hereunder.
Data Sources: Genesee County Department of Planning, Esri, HERE, DeLorme, MapmyIndia, © OpenStreetMap contributors, and the GIS user community

Map Prepared by: Genesee County Planning Department



Town of Alabama

GENESEE COUNTY, NEW YORK

Agricultural Plan

Prioritized Lands for Protection & Growth Areas



LEGEND

- Stamp Site
- TD-3 Stamp Area - Large Scale Mixed Use Development
- Mining/Quarry
- Priority Lands for Protection (Identified in County Ag Plan)
- Park / Refuge / Protected Land
- Smart Growth Development Area
- Farm (Identified in Town Ag Plan)

Hamlet

- Alabama Hamlet - Small commercial uses and some residential
- Basom Hamlet - Primarily road frontage commercial uses
- South Alabama Hamlet - All single family residential



Wendel WD Architecture, Engineering, Surveying & Landscape Architecture, P.C. shall assume no liability for 1. Any errors, omissions, or inaccuracies in the information provided regardless of how caused or 2. Any decision or action taken or not taken by the reader in reliance upon any information or data furnished hereunder. Data Sources: Esri, HERE, DeLorme, MapmyIndia, OpenStreetMap contributors, Clark Patterson Lee, NYS GIS Program Office

